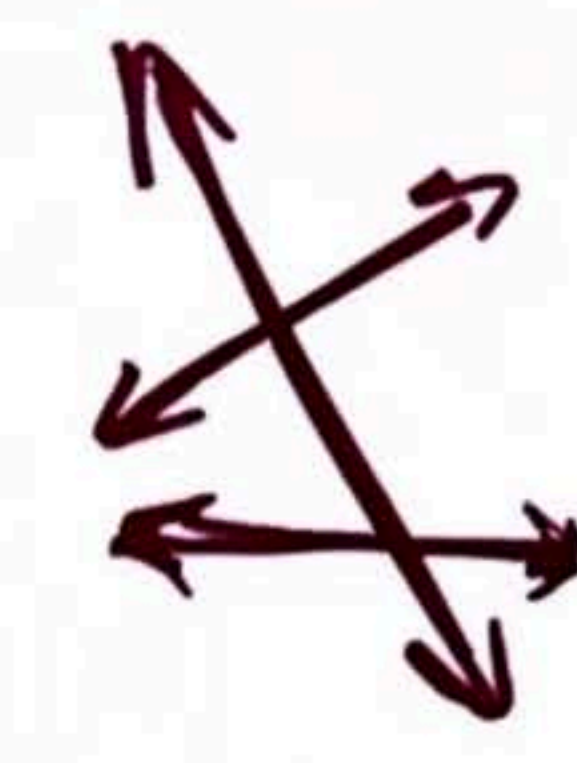
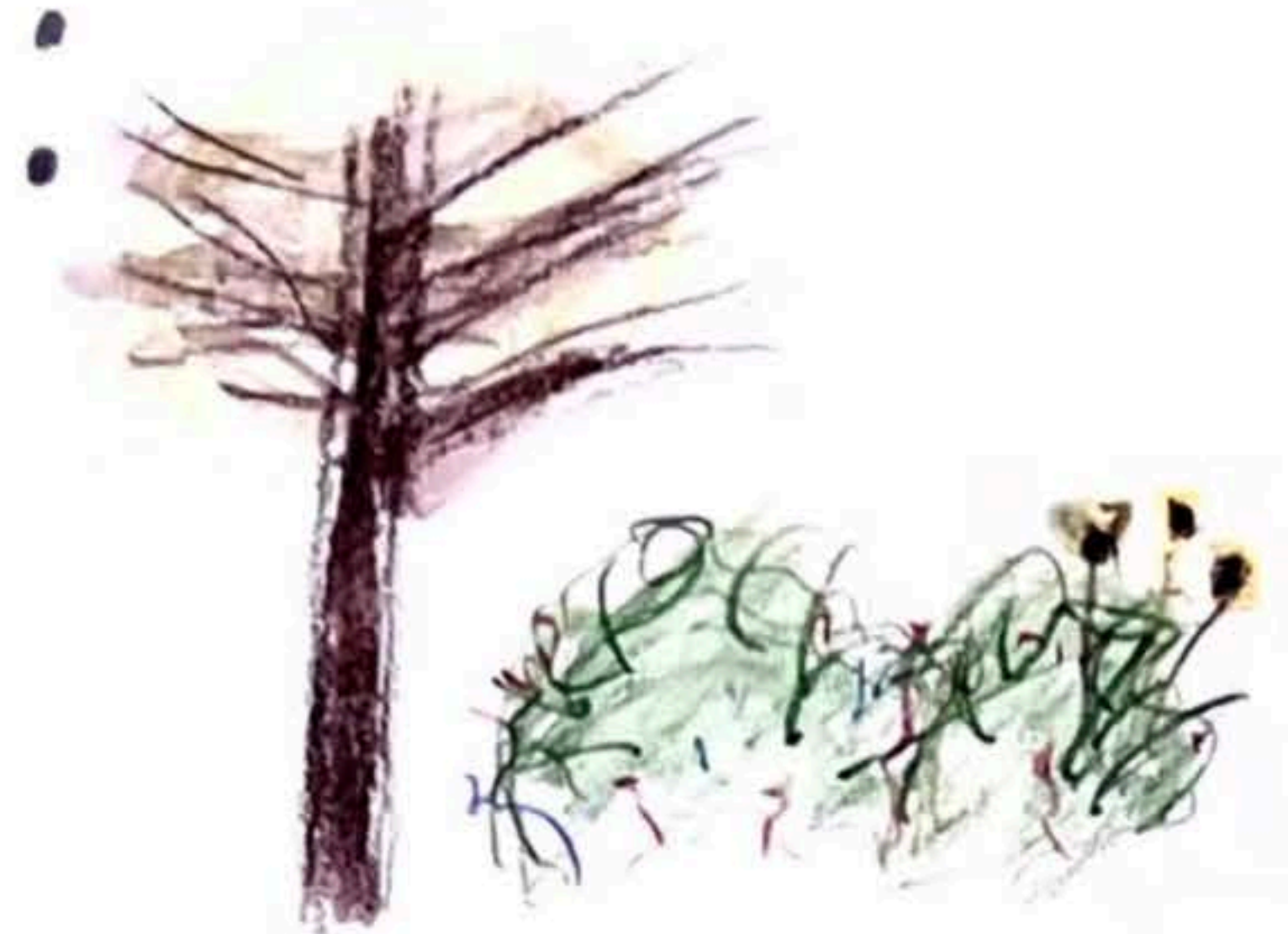


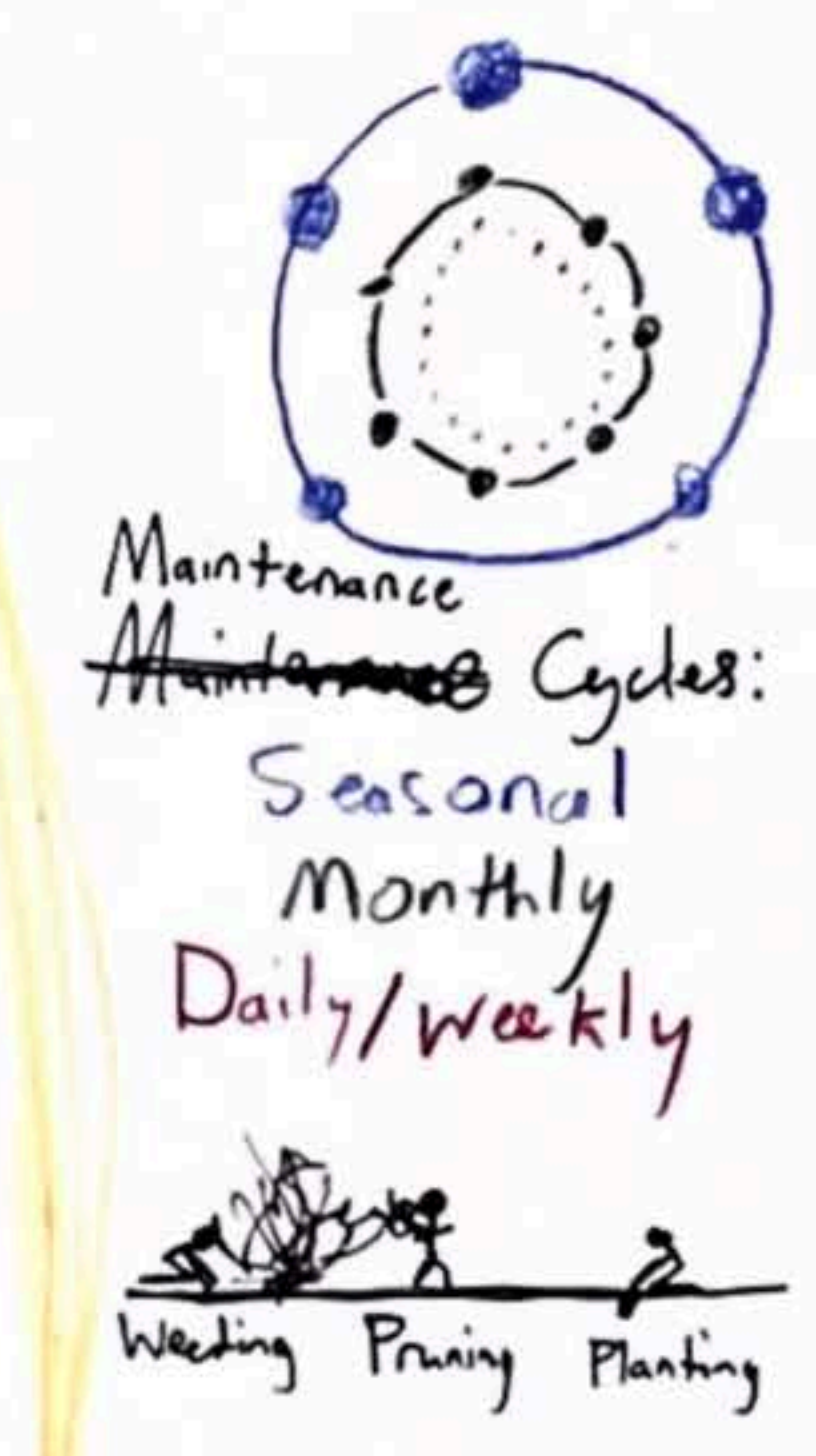
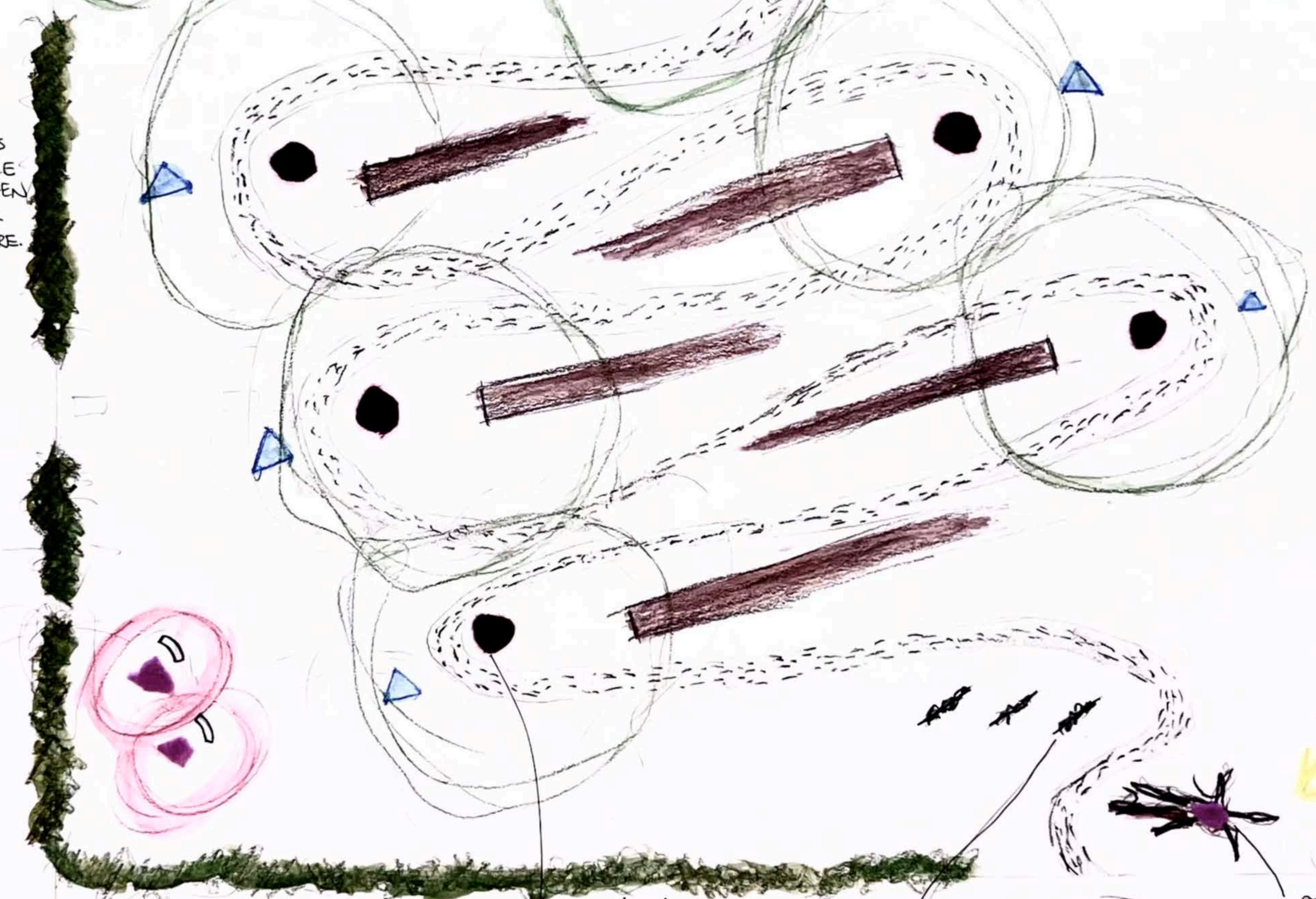
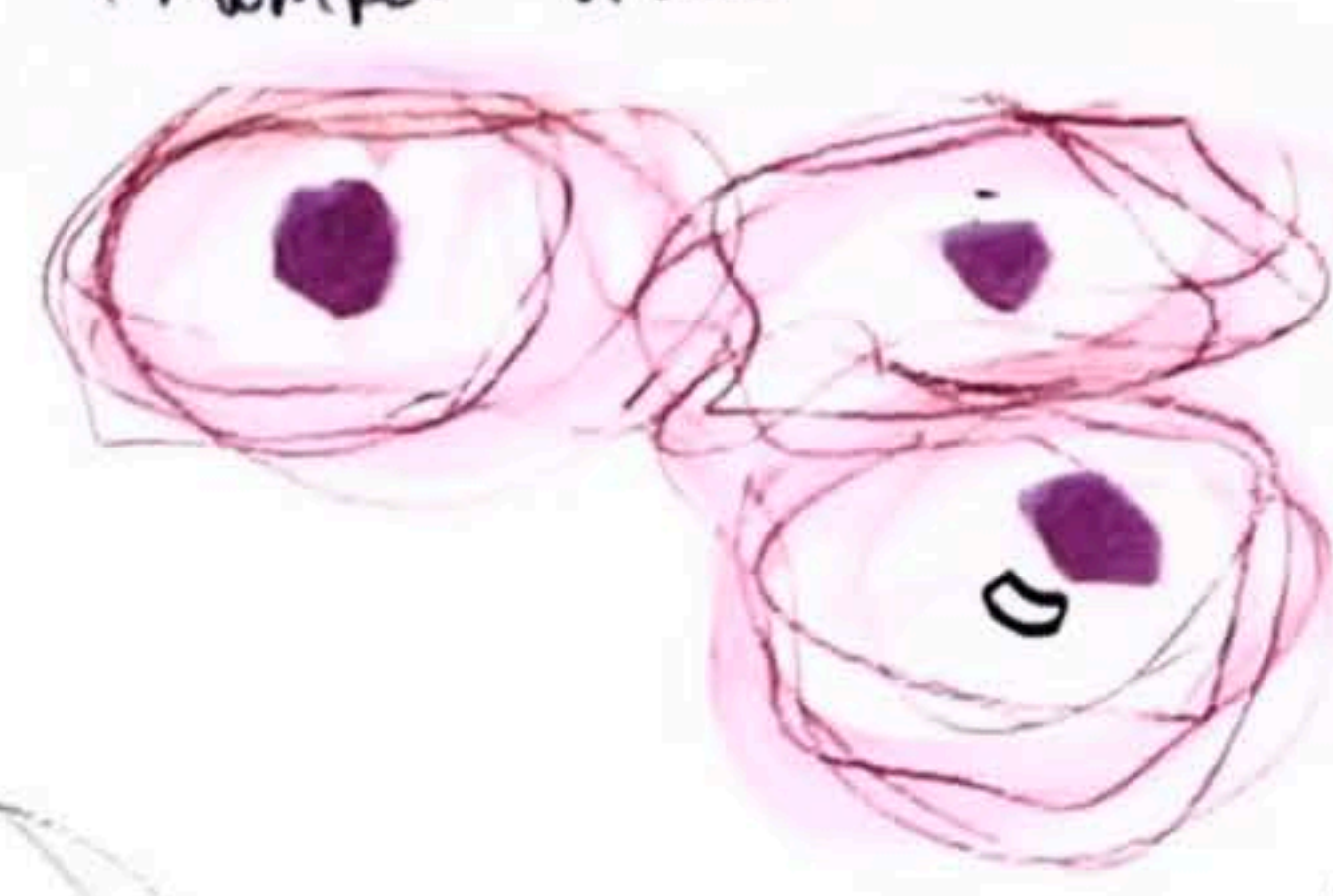
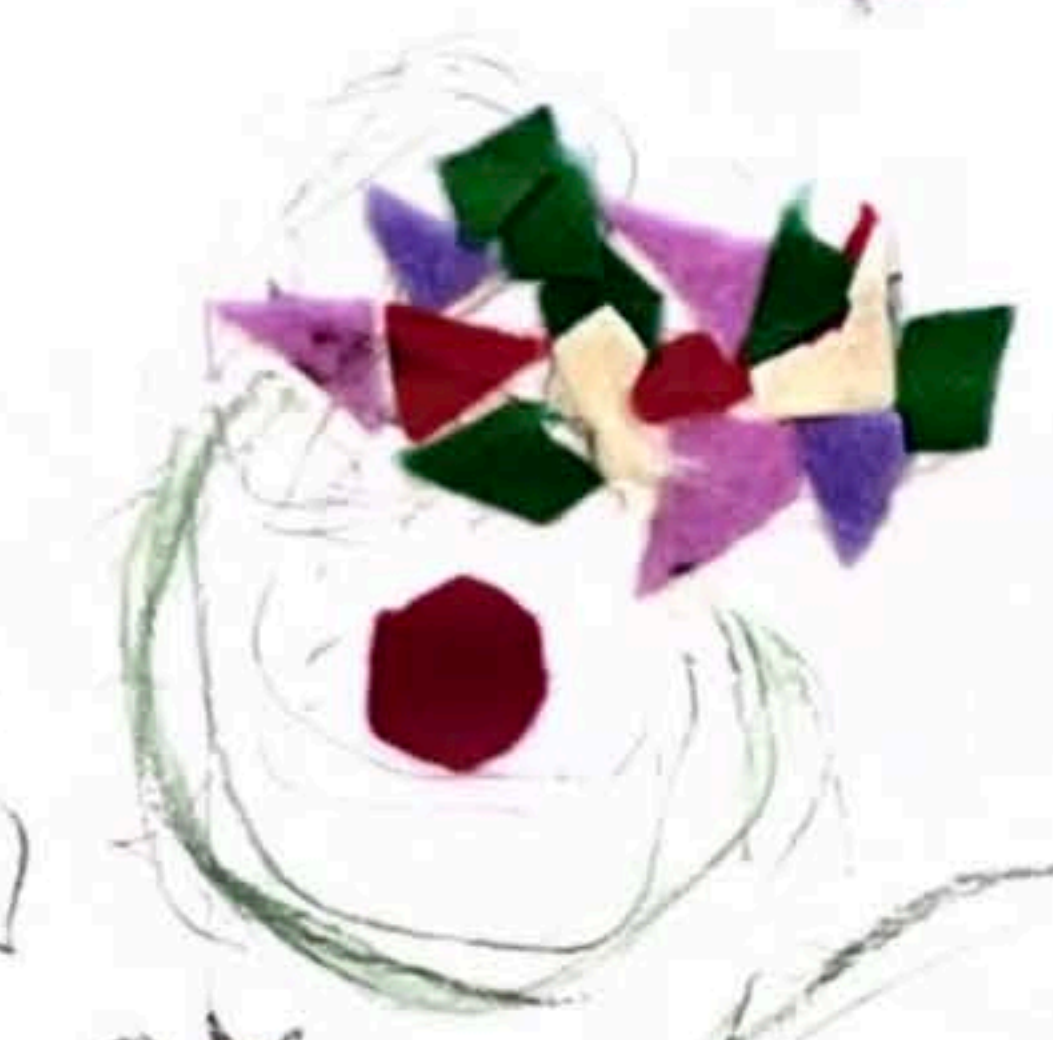
RE-MEMBERING: NATURE AS COMMUNITY



Plant Life

- Big Trees - American Sycamore
- Smaller Trees - Maple (Red/Sugar)
- Flowers - Purple Cone flower
- Black-eyed Susans
- Sunflowers
- Trumpet Vines

- Shrubs - Spice Bush
- Rusty Black Hawth
- Grasses - Clover
- Wild Rye

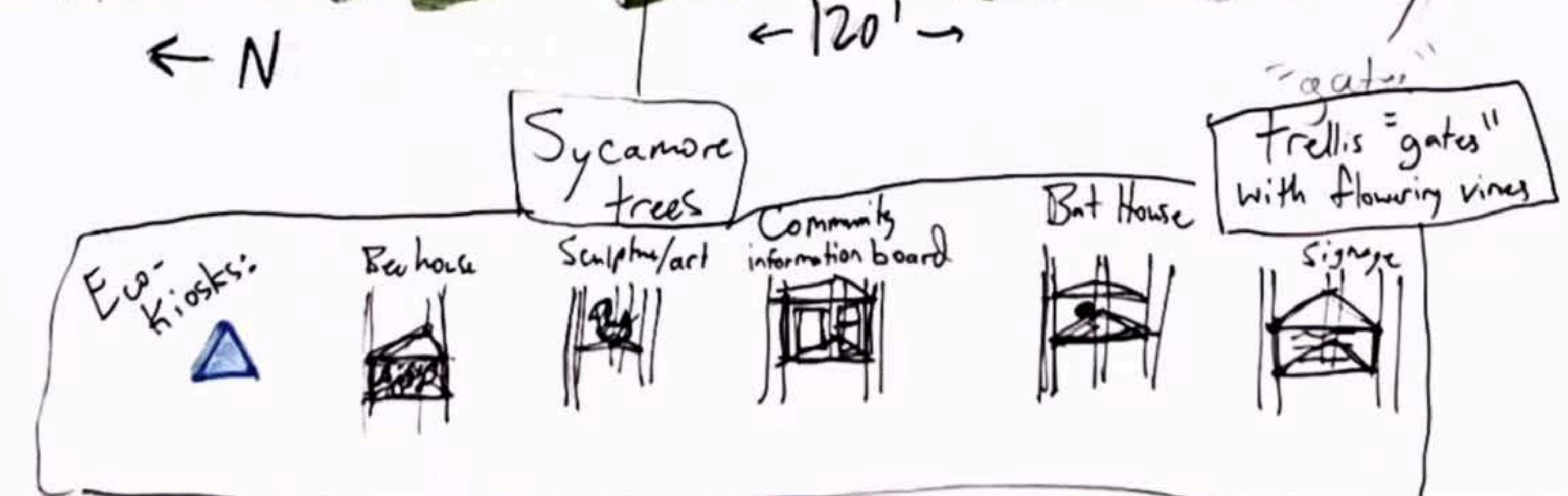
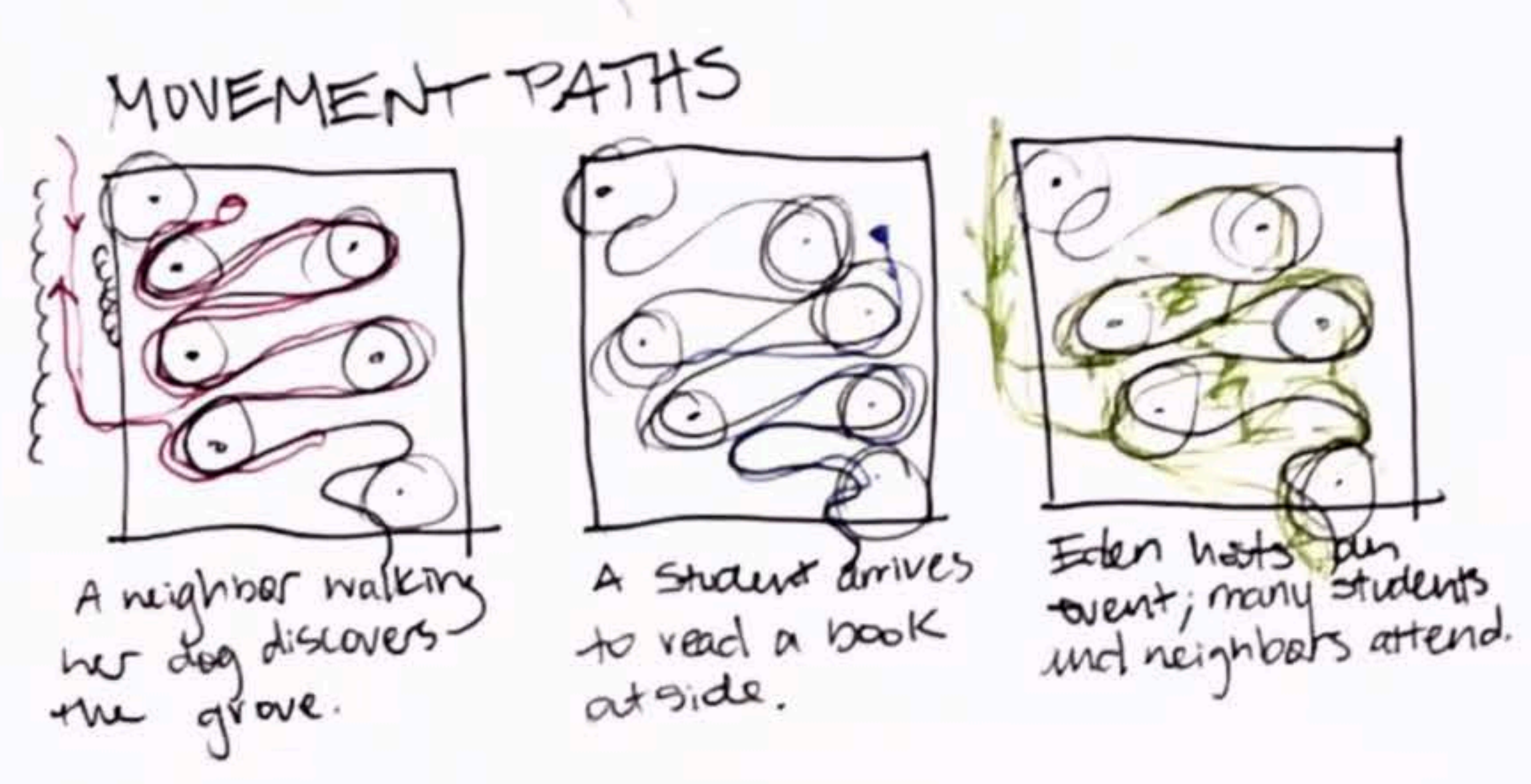
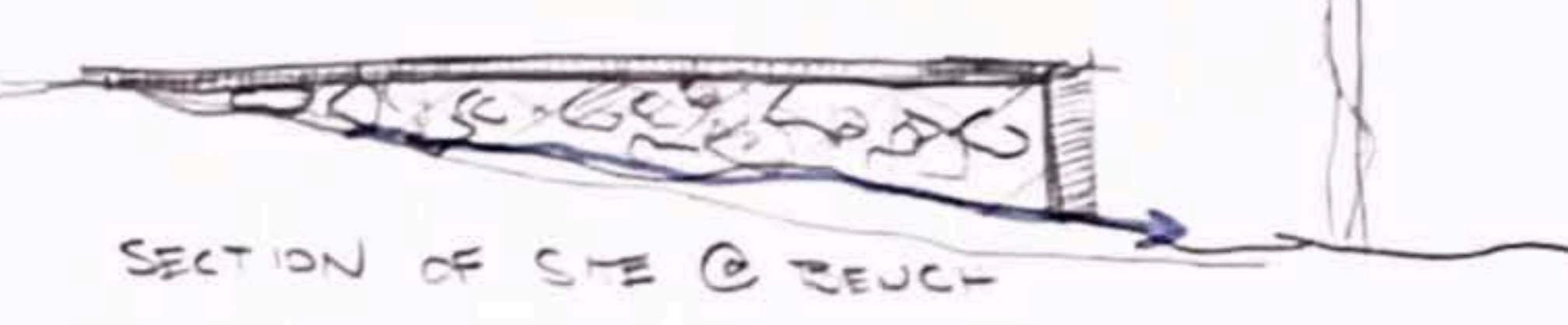
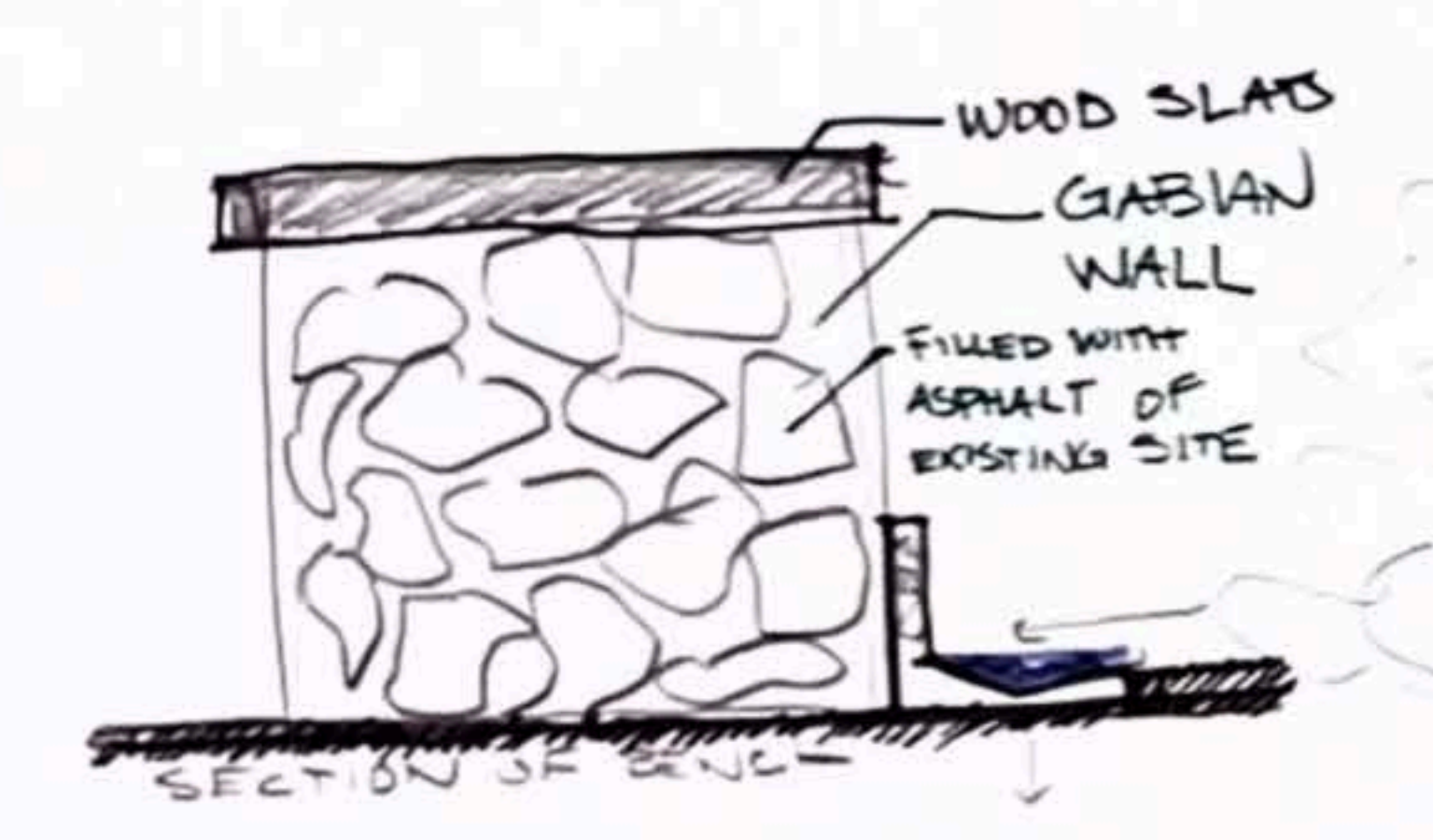


100'

path detail:
Vertically-seated river stones
give an intentional
Walking experience: ripples

THE FOCAL POINT OF THE SITE LAYERS PLANTS OF ALL SIZES TO CREATE A MOMENT OF PAUSE, A PLACE OF LISTENING, AND A MICROCOSM OF CONNECTION.

THIS SPOT ALSO ACTS AS A NATURAL PLACE FOR A SPEAKER WHEN LARGER GROUPS ARE GATHERED HERE.



Eastern Red Cedar

Asphalt pavers lead from road to Entrance